

Metris S
Single-Hole Bidet Faucet

Finish: **brushed nickel** Part no. : **31261821**



Description

Features

- Spout height: 83 mm
- Pivoting aerator
- Max. flow: 1.5 GPM (5.7 L/Min)
- Ceramic cartridge
- Includes pop-up drain

Item details

List Price \$ 618.00

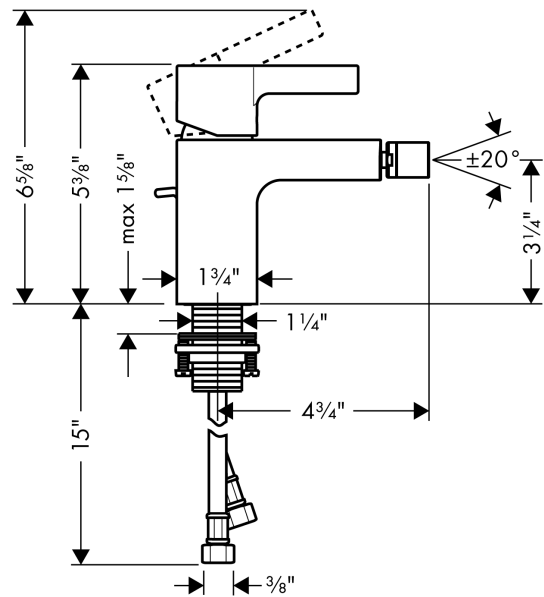
Compliance / Sustainability



Product image



Scale drawing

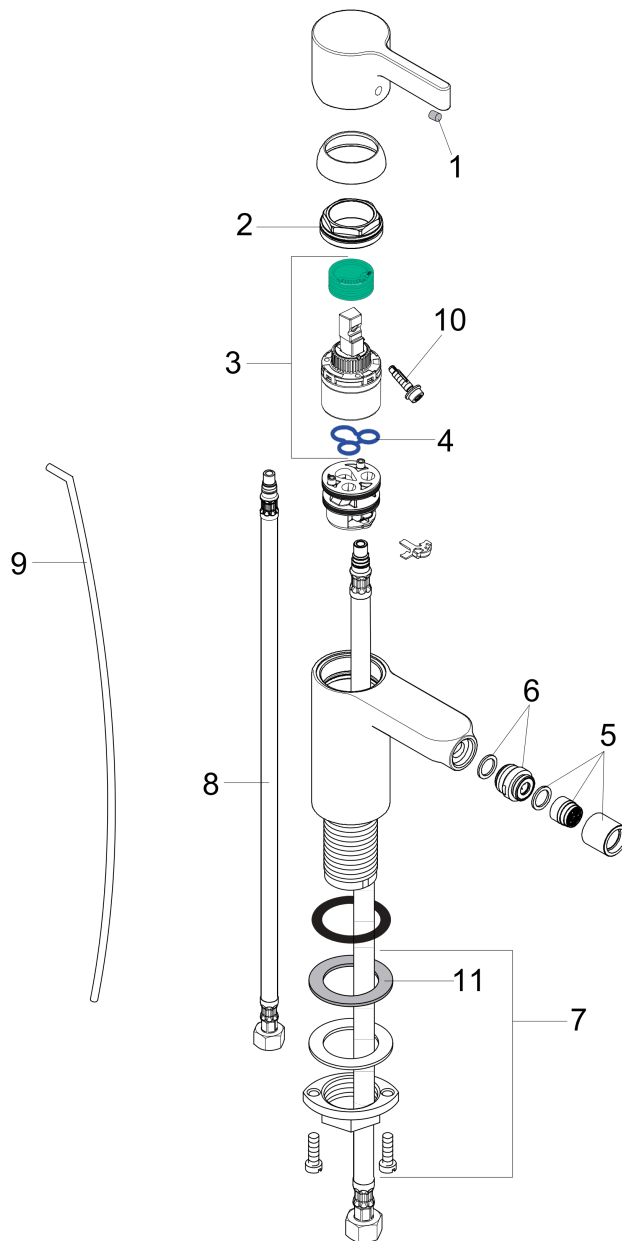


Metris S
Single-Hole Bidet Faucet
 Finish: brushed nickel Part no. : 31261821



Exploded drawing

Year of production: >11/06



Metris S

Single-Hole Bidet Faucet

Finish: **brushed nickel** Part no. : **31261821**



Spare parts list

Year of production: >11/06

Pos.	Description	Part no.	Price	PU
1	screw cover	96338000	-	1
2	nut	97209000	-	1
3	cartridge, assy	92730000	-	1
4	seal	95008000	-	1
5	aerator laminar M16x1 (7 l/min)	97360820	-	1
6	ball joint	97362820	-	1
7	fixing set (Ø 32)	13961000	-	1
8	connection hose 18½" M8x0,75 3/8"	96321001	-	1
9	pull rod	96657820	-	1
10	locking screw for handle	96059000	-	1
11	lever collar	97548000	-	1
a	pop up waste	88509820	-	1
b	fixation extension 35 mm	13898000	-	1